

[View](#)
[Edit](#)
[Delete](#)
[Revisions](#)

## About the API

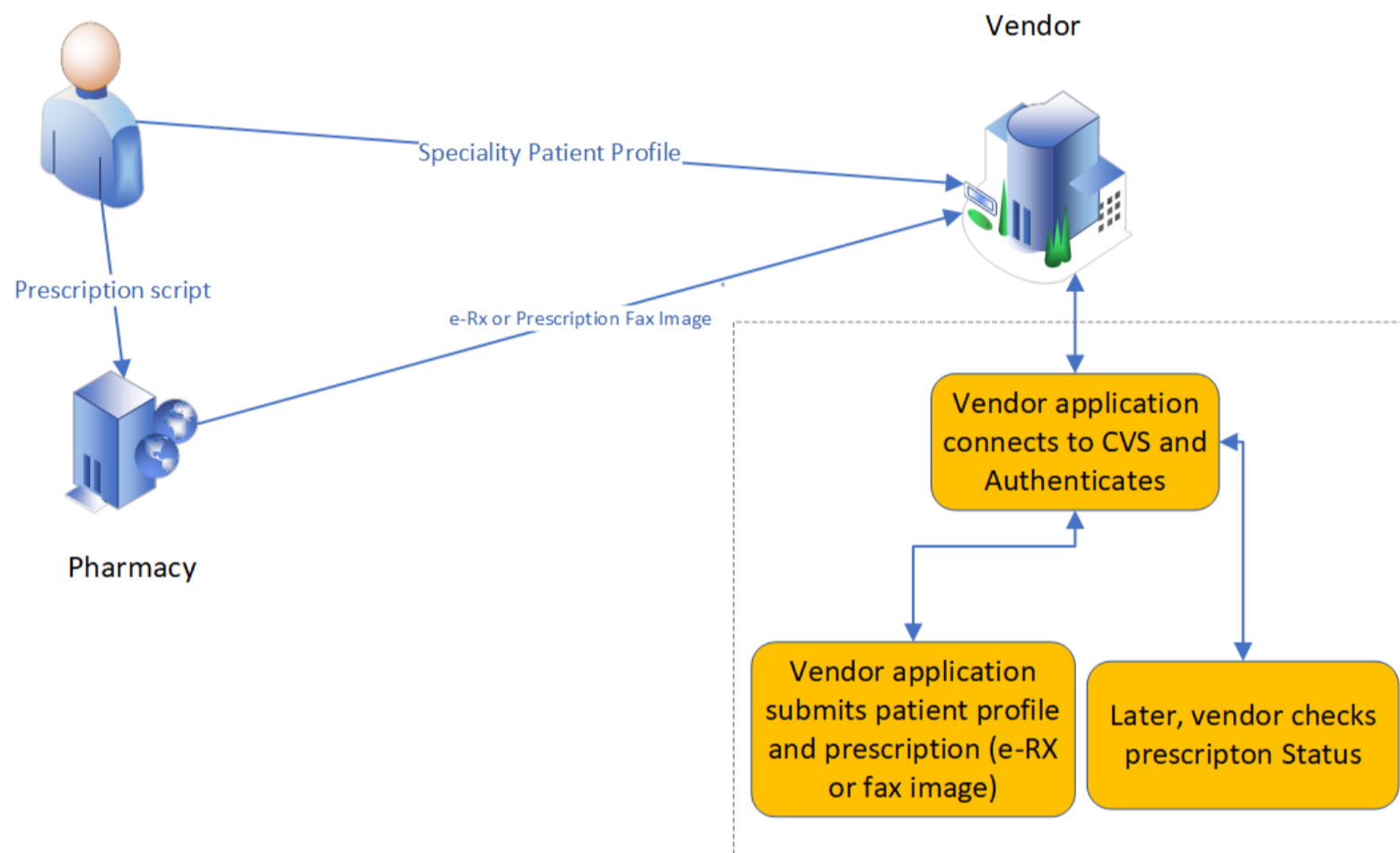
Specialty Patient Enrollment APIs provide services to external partners to replace legacy fax processing of prescriptions with electronic processing that is considerably faster and provides a better user experience.

This product requires that the partner sends the patient profile and qualified prescription information (e-Rx or fax image) that is originated from an electronically-based prescribing platform. The API maps the data elements in the payload to create the patient prescription referral in the CVS Specialty dispensing system, and returns an encrypted ID that the partner can then use to track referral status (rather than sending PHI).

You can find out more about the API at <https://developer.cvshealth.com>.

## User Journey

Doctor's Office



User Journey

The illustration shows the typical user journey for the partner:

I am a CVS vendor and have a new specialty patient.

1. I access my e-prescribing platform and "enroll" the speciality patient's information into a patient profile.
2. For each prescription for the patient, I submit a referral request to the CVS Specialty dispensing system intake endpoint including the patient profile data and the prescription information received as an e-Rx or fax image.
3. CVS responds with an encrypted ID for me to track the status of that specific prescription.
4. Later I check on the status of one or more of the patient's prescriptions by submitting a request to the CVS status endpoint with the corresponding referral IDs.
5. The CVS response lists the current status of each of those referrals.

## How do I make this API Work?

The vendor user must authenticate with the CVS Dispensary before submitting a request to the intake endpoint containing the patient's profile and prescription information. If the request is successfully processed, the CVS response includes an encrypted transaction ID for tracking the prescription.

The partner can check the prescription status at any time by sending a request with the ID to the status endpoint.

Refer to the sample requests and responses.

## What responses will the API return?

Successful processing of the partner's request returns a 200 status with the corresponding response.

For example, the partner submits a request for a new referral to the intake endpoint:

```
https://api.cvshealth.com/specialty/patient/referral/v1/intake
```

And includes the patient and prescription data in the payload.

```

{
  "transactionId": "605841b8-1cef-11ea-978f-2e728ce88125",
  "clinical": {
    "allergyIntolerance": {
      "allergies": [
        {
          "category": "Food",
          "clinicalStatus": "active",
          "note": "Patient needs to be careful about food.",
          "lastOccurrence": "winter 2018",
          "onsetString": "August 2017",
          "reactions": [
            {
              "description": "when i was in school, i ate peanut accidently and got rash.",
              "manifestation": "Rash",
              "severity": "mild"
            }
          ],
          "substance": "Penicillin",
          "verificationStatus": "confirmed"
        }
      ],
      "emptyReasonCode": "string"
    },
    "height": "165",
    "weight": "129.38",
    "doctorNote": "Patient shall take rest for atleast 3 days."
  },
  "coverage": {
    "primary": {
      "companyName": "Anthem",
      "helpDeskPhoneNumber": "6564533434",
      "bin": "444336",
      "groupNumber": "RX5205",
      "memberId": "455441340342",
      "pcn": "ADV",
      "personCode": "001"
    },
    "secondary": [
      {
        "companyName": "Aetna",
        "helpDeskPhoneNumber": "5565554343",
        "bin": "65655",
        "groupNumber": "RX5205",
        "memberId": "455441340342",
        "pcn": "ADV",
        "personCode": "JMB"
      }
    ],
    "policyHolderGivenName": "Aegon",
    "policyHolderFamilyName": "Targaryen"
  },
  "patient": {
    "name": {
      "use": "official",
      "given": "Aegon",
      "family": "Targaryen",
      "prefix": "Mr"
    },
    "addresses": [
      {
        "use": "home",
        "line1": "1425, s wolf road",
        "line2": "apt 123",
        "city": "Northbrook",
        "county": "cook",
        "stateCode": "IL",
        "postalCode": "60062"
      }
    ],
    "birthDate": "1993-10-21T00:00:00.000Z",
    "genderCode": "M",
    "communication": {
      "contact": [
        {
          "system": "email",
          "value": "jonsnow@gmail.com",
          "use": "home"
        }
      ]
    }
  }
}

```

```

    },
    {
      "system": "phone",
      "value": "8463452323",
      "use": "personal"
    }
  ],
  "optInPreferences": {
    "acceptedLanguageTCPA": "english",
    "messagingType": "email"
  },
  "relationship": "self"
},
"consents": [
  {
    "system": "patientMessagingConsent",
    "value": "Y",
    "use": "patient"
  },
  {
    "system": "patientViewMedRecConsent",
    "value": "N",
    "use": "patient"
  }
]
},
"prescriber": {
  "identifiers": [
    {
      "system": "DEA",
      "value": "8463452323"
    },
    {
      "system": "NPI",
      "value": "8463652323"
    }
  ],
  "name": {
    "use": "official",
    "given": "Melisandre",
    "family": "Asshai",
    "prefix": "Dr"
  },
  "consents": [
    {
      "system": "patientMessagingConsent",
      "value": "Y",
      "use": "patient"
    }
  ],
  "communication": {
    "contact": [
      {
        "system": "email",
        "value": "Asshai@gmail.com",
        "use": "office"
      },
      {
        "system": "phone",
        "value": "8463452323",
        "use": "personal"
      },
      {
        "system": "fax",
        "value": "8463452323",
        "use": "work"
      }
    ]
  },
  "location": {
    "name": "Northwest Community Hospital",
    "officeContactName": {
      "use": "official",
      "given": "Melisandre",
      "family": "Asshai",
      "prefix": "Dr"
    },
    "address": {
      "use": "work",

```

```

    "line1": "2211 sanders road",
    "line2": "suite 123",
    "city": "Northbrook",
    "county": "cook county",
    "stateCode": "IL",
    "postalCode": "60062"
  }
},
"prescription": [
  {
    "drugIdentifier": {
      "system": "500903530",
      "value": "8463452323",
      "name": "Adalimumab"
    },
    "diagnosticIdentifier": [
      {
        "system": "ICD10",
        "value": "4545453",
        "name": "Adalimumab"
      }
    ],
    "authoredOn": "2019-11-22T00:00:00.000Z",
    "submission": {
      "eRxVendorId": "V7870",
      "eRxNumber": "006DFC08-8123-4482-31F7-AC73106F1C8A",
      "channel": "eRx"
    },
    "mDOConsentRefId": "ID-frtg-4532-tyed-qwde",
    "note": "the drug may make you dizzy. So do not drive immediately",
    "quantityQualifierCode": "V7870",
    "refills": 5,
    "sig": "take 1 tablet per day",
    "strength": 500,
    "strengthUnits": "mcg",
    "substitutionAllowed": "true",
    "daysSupply": 30
  }
],
"rxImage": {
  "content": {
    "id": "12edecfidnen87rj4h5b6k5b",
    "type": "image/tiff",
    "data": "string"
  }
}
}

```

The successful response (200) includes the referral transaction ID:

```

{
  "transactionId": "605841b8-1cef-11ea-978f-2e728ce88125",
  "statusDescription": "Success",
  "statusCode": "0000"
}

```

The partner can then use the transaction ID to track the referral by sending a request to the status endpoint.

```

https://api.cvshealth.com/specialty/patient/referral/v1/status

```

Request body:

```

{
  "transactionIds": [
    "006DFC08-8123-4482-31F7-AC73106F1C8A"
  ]
}

```

Successful processing returns the current referral status.

```
{
  "statusCode": "0000",
  "statusDescription": "Success",
  "referralStatus": [
    {
      "transactionId": "605841b8-1cef-11ea-978f-2e728ce88125",
      "status": "Pending",
      "reason": "Insurance Denied"
    }
  ]
}
```

An unsuccessful request will return an error code and a brief description of the problem. For example, here is a 401 error.

```
{
  "statusCode": "1001",
  "statusDescription": "Looks like your Bearer token is not valid. Please obtain a new token.",
  "fault": {
    "moreInfo": "https://developer.cvshealth.com/common/error-codes",
    "type": "",
    "title": ""
  }
}
```

For further information, refer to [common status codes](#) in the developer portal.

## How do I test this API?

A simple and useful way to get familiar with the behavior of this API when integrating it with your application is to perform mock server testing. Mocking helps focus your attention on the code being tested instead of the behavior of external dependencies by using sample test data and simulating endpoint URLs and response objects. You will need the following:

- An OAuth token
- A mock server URL
- Sample test data

In mock-mode, set up the mock server endpoint you will use. For example, Hit the mock endpoint using the 'x-mock' header with value Y/y and the sample data below.

```

{
  "info": {
    "_postman_id": "99d2f35f-563f-4b8d-b143-1d88d63e4519",
    "name": "specialty-patient-enrollment",
    "schema": "https://schema.getpostman.com/json/collection/v2.1.0/collection.json"
  },
  "item": [
    {
      "name": "Get Oauth Token",
      "request": {
        "auth": {
          "type": "basic",
          "basic": [
            {
              "key": "username",
              "value": "vTqqwjGgjSgBIbF0v5G6Kcp5HCRj37nG",
              "type": "string"
            },
            {
              "key": "password",
              "value": "2VaLB0YnCiZV7RKp",
              "type": "string"
            }
          ]
        },
        "method": "POST",
        "header": [
          {
            "key": "Content-Type",
            "name": "Content-Type",
            "value": "application/x-www-form-urlencoded",
            "type": "text"
          },
          {
            "warning": "This is a duplicate header and will be overridden by
the Authorization header generated by Postman.",
            "key": "Authorization",
            "value": "Bearer",
            "type": "text",
            "disabled": true
          }
        ],
        "body": {
          "mode": "urlencoded",
          "urlencoded": [
            {
              "key": "clit_id",
              "value": "KXB9gJZiD1e65pK2b1s0fRzQN27i0D0L",
              "type": "text",
              "disabled": true
            },
            {
              "key": "client_secret",
              "value": "8wdyX17Jr2IB66XJ",
              "type": "text",
              "disabled": true
            },
            {
              "key": "grant_type",
              "value": "client_credentials",
              "type": "text"
            }
          ],
          "options": {
            "urlencoded": {}
          }
        },
        "url": {
          "raw": "{{host}}/oauth2/v1/token",
          "host": [
            "{{host}}"
          ],
          "path": [
            "oauth2",
            "v1",
            "token"
          ]
        }
      }
    }
  ]
}

```

```

    },
    "response": []
  },
  {
    "name": "specialty/patient/referral/v1",
    "event": [
      {
        "listen": "prerequisite",
        "script": {
          "id": "eafb4ea8-4311-4cf8-882c-a1b9867aeec0",
          "exec": [
            ""
          ],
          "type": "text/javascript"
        }
      }
    ],
    "request": {
      "method": "POST",
      "header": [
        {
          "key": "Authorization",
          "value": "Bearer QIVTLhEvdojVYsQCQU0TKAS9Xjng",
          "type": "text"
        },
        {
          "key": "x-mock",
          "value": "Y",
          "type": "text",
          "disabled": true
        },
        {
          "key": "Content-Type",
          "value": "application/json",
          "type": "text",
          "disabled": true
        },
        {
          "key": "Origin",
          "value": " https://developer.cvshealth.com",
          "type": "text",
          "disabled": true
        },
        {
          "key": "Content-Type",
          "value": "application/json",
          "type": "text",
          "disabled": true
        },
        {
          "key": "Accept",
          "value": "application/json",
          "type": "text",
          "disabled": true
        }
      ],
      "body": {
        "mode": "raw",
        "raw": "{\n  \"transactionId\": \"605841b8-1cef-11ea-978f-2e728ce88125\", \n  \"clinical\": {\n    \"allergyIntolerance\": {\n      \"allergies\": [\n        {\n          \"category\": \"Food\", \n          \"clinicalStatus\": \"active\", \n          \"note\": \"Patient needs to be careful about food.\", \n          \"lastOccurrence\": \"winter 2018\", \n          \"onsetString\": \"August 2017\", \n          \"reactions\": [\n            {\n              \"description\": \"when i was in school, i ate peanut accidentally and got rash.\", \n              \"manifestation\": \"Rash\", \n              \"severity\": \"mild\" \n            } \n          ], \n          \"substance\": \"Penicillin\", \n          \"verificationStatus\": \"confirmed\" \n        } \n      ], \n      \"emptyReasonCode\": \"\" \n    }, \n    \"height\": \"165\", \n    \"weight\": \"129.38\", \n    \"doctorNote\": \"Patient shall take rest for at least 3 days.\" \n  }, \n  \"coverage\": {\n    \"primary\": {\n      \"companyName\": \"Anthem\", \n      \"helpDeskPhoneNumber\": \"6564533434\", \n      \"bin\": \"444336\", \n      \"groupNumber\": \"RX5205\", \n      \"memberId\": \"455441340342\", \n      \"pcn\": \"ADV\", \n      \"personCode\": \"001\" \n    }, \n    \"secondary\": [\n      {\n        \"companyName\": \"Aetna\", \n        \"helpDeskPhoneNumber\": \"5565554343\", \n        \"bin\": \"65655\", \n        \"groupNumber\": \"RX5205\", \n        \"memberId\": \"455441340342\", \n        \"pcn\": \"ADV\", \n        \"personCode\": \"JMB\" \n      } \n    ], \n    \"policyHolderGivenName\": \"Aegon\", \n    \"policyHolderFamilyName\": \"Targaryen\" \n  }, \n  \"patient\": {\n    \"name\": {\n      \"official\", \n      \"given\": \"Aegon\", \n      \"family\": \"Targaryen\", \n      \"prefix\": \"Mr\" \n    }, \n    \"addresses\": [\n      {\n        \"use\": \"home\", \n        \"line1\": \"1425, s wolf road\", \n        \"line2\": \"apt 123\", \n        \"city\":

```



```
\\"Northbrook\\",\n  \\"county\\": \\"cook\\",\n  \\"stateCode\\": \\"IL\\",\n  \\"postalCode\\": \\"60062\\",\n  \\"birthDate\\": \\"1993-10-21\\",\n  \\"genderCode\\": \\"M\\",\n  \\"communication\\": {\n    \\"contact\\": [\n      {\n        \\"system\\": \\"email\\",\n        \\"value\\": \\"jonsnow@gmail.com\\",\n        \\"use\\": \\"home\\",\n        \\"value\\": \\"8463452323\\",\n        \\"use\\": \\"personal\\",\n      },\n      {\n        \\"system\\": \\"phone\\",\n        \\"value\\": \\"8463452323\\",\n        \\"use\\": \\"personal\\",\n      },\n    ],\n  },\n  \\"optInPreferences\\": {\n    \\"acceptedLanguageTCPA\\": \\"english\\",\n    \\"messagingType\\": \\"email\\",\n    \\"relationship\\": \\"self\\",\n  },\n  \\"consents\\": [\n    {\n      \\"system\\": \\"patientMessagingConsent\\",\n      \\"value\\": \\"Y\\",\n      \\"use\\": \\"patient\\",\n    },\n    {\n      \\"system\\": \\"patientViewMedRecConsent\\",\n      \\"value\\": \\"N\\",\n      \\"use\\": \\"patient\\",\n    },\n  ],\n  \\"prescriber\\": {\n    \\"identifiers\\": [\n      {\n        \\"system\\": \\"NPI\\",\n        \\"value\\": \\"1356378384\\",\n        \\"name\\": {\n          \\"given\\": \\"Melisandre\\",\n          \\"family\\": \\"Asshai\\",\n          \\"prefix\\": \\"Dr\\",\n          \\"consents\\": [\n            {\n              \\"system\\": \\"patientMessagingConsent\\",\n              \\"value\\": \\"Y\\",\n              \\"use\\": \\"patient\\",\n            },\n          ],\n          \\"communication\\": {\n            \\"contact\\": [\n              {\n                \\"system\\": \\"email\\",\n                \\"value\\": \\"Asshai@gmail.com\\",\n                \\"use\\": \\"office\\",\n              },\n              {\n                \\"system\\": \\"phone\\",\n                \\"value\\": \\"8463452323\\",\n                \\"use\\": \\"personal\\",\n              },\n              {\n                \\"system\\": \\"fax\\",\n                \\"value\\": \\"8463452323\\",\n                \\"use\\": \\"work\\",\n              },\n            ],\n          },\n          \\"location\\": {\n            \\"name\\": \\"Northwest Community Hospital\\",\n            \\"use\\": \\"official\\",\n            \\"given\\": \\"Melisandre\\",\n            \\"family\\": \\"Asshai\\",\n            \\"prefix\\": \\"Dr\\",\n            \\"address\\": {\n              \\"line1\\": \\"2211 sanders road\\",\n              \\"line2\\": \\"suite 123\\",\n            },\n            \\"city\\": \\"Northbrook\\",\n            \\"county\\": \\"cook county\\",\n            \\"stateCode\\": \\"IL\\",\n            \\"postalCode\\": \\"60062\\",\n          },\n          \\"prescription\\": [\n            {\n              \\"drugIdentifier\\": {\n                \\"system\\": \\"500903530\\",\n                \\"value\\": \\"8463452323\\",\n                \\"name\\": \\"Adalimumab\\",\n                \\"diagnosticIdentifier\\": {\n                  \\"system\\": \\"ICD10\\",\n                  \\"value\\": \\"4545453\\",\n                  \\"name\\": \\"Adalimumab\\",\n                },\n                \\"authoredOn\\": \\"2019-11-22\\",\n                \\"submission\\": {\n                  \\"eRxVendorId\\": \\"V7870\\",\n                  \\"eRxNumber\\": \\"006DFC08-8123-4482-31F7-AC73106F1C8A\\",\n                  \\"channel\\": \\"eRx\\",\n                  \\"mDOConsentRefId\\": \\"ID-frtg-4532-tyed-qwde\\",\n                  \\"note\\": \\"the drug may make you dizzy. So do not drive immediately\\",\n                  \\"quantityQualifierCode\\": \\"V7870\\",\n                  \\"refills\\": 5,\n                  \\"sig\\": \\"take 1 tablet per day\\",\n                  \\"strength\\": 500,\n                  \\"strengthUnits\\": \\"mcg\\",\n                  \\"substitutionAllowed\\": \\"yes\\",\n                  \\"daysSupply\\": 30,\n                  \\"rxImage\\": {\n                    \\"content\\": {\n                      \\"data\\": \\"iVBORw0KGgoAAAANSUhEUgAAAwAAAK2CAIAAABs04yLAAAKmG1DQ1BJQ0MgUHJvZmlsZQAASImVlgdQVfKWhu97nR0pGwQkNDkjOUqODUjOJprupo\n                      \\"id\\": \\"12edecfidnen87rj4h5b6k5b\\",\n                      \\"type\\": \\"IMAGE/TIFF\\",\n                    },\n                    \\"options\\": {\n                      \\"raw\\": {\n                        \\"language\\": \\"json\\",\n                      },\n                    },\n                  },\n                },\n              ],\n            },\n          ],\n          \\"url\\": {\n            \\"raw\\": \\"{{host}}/specialty/patient/referral/v1/intake\\",\n            \\"host\\": [\n              \\"{{host}}\\",\n            ],\n            \\"path\\": [\n              \\"specialty\\",\n              \\"patient\\",\n              \\"referral\\",\n              \\"v1\\",\n              \\"intake\\",\n            ],\n          },\n        },\n      },\n    ],\n  },\n  \\"response\\": [],\n},\n{\n  \\"name\\": \\"referral-status\\",\n  \\"event\\": [\n    {\n      \\"listen\\": \\"prerequisite\\",\n      \\"script\\": {\n        \\"id\\": \\"ab227609-c270-4984-973f-b83d69ce1ae9\\",\n        \\"exec\\": [\n          \\"\\",\n        ],\n        \\"type\\": \\"text/javascript\\",\n      },\n    },\n  ],\n  \\"request\\": {\n    \\"method\\": \\"POST\\",\n    \\"header\\": [\n
```

```

    {
      "key": "Authorization",
      "value": "Bearer QIVTLhEvdojVYsQCQU0TKAS9Xjng",
      "type": "text"
    },
    {
      "key": "x-mock",
      "value": "Y",
      "type": "text",
      "disabled": true
    },
    {
      "key": "Content-Type",
      "value": "application/json",
      "type": "text",
      "disabled": true
    },
    {
      "key": "Origin",
      "value": " https://developer.cvshealth.com",
      "type": "text",
      "disabled": true
    },
    {
      "key": "Content-Type",
      "value": "application/json",
      "type": "text",
      "disabled": true
    },
    {
      "key": "Accept",
      "value": "application/json",
      "type": "text",
      "disabled": true
    }
  ],
  "body": {
    "mode": "raw",
    "raw": "{\n  \"transactionIds\": [\n    \"006DFC08-8123-4482-31F7-AC73106F1C8A\", \n    \"006DFC08-8123-4482-31F7-AC73106F1C8B\", \n    \"006DFC08-8123-4482-31F7-AC73106F1C8C\", \n    \"006DFC08-8123-4482-31F7-AC73106F1C8D\" \n  ]\n}",
    "options": {
      "raw": {
        "language": "json"
      }
    }
  },
  "url": {
    "raw": "{{host}}/specialty/patient/referral/v1/status",
    "host": [
      "{{host}}"
    ],
    "path": [
      "specialty",
      "patient",
      "referral",
      "v1",
      "status"
    ]
  }
},
"response": []
}
],
"protocolProfileBehavior": {}
}

```